



INTERIOR MOUNT INSTALLATION ADDENDUM (OPTIONAL METHOD)

Windows are still set from the exterior — just not fastened from the exterior

OVERVIEW

Xtend Porch Windows are designed to be installed through the exterior mounting flange. The flange, sill, and frame are engineered to properly manage water.

Even when installing from the interior, the unit must be positioned the same way:

- Window is **inserted from the interior**
- Then **pulled back to seat the flange tight to the exterior framing**

All standard water management practices still apply.

⚠ IMPORTANT

Whenever possible, install through the **pre-drilled holes in the exterior flange**.

Interior fastening is an alternative method only when exterior access is not practical. **DO NOT REMOVE EXTERIOR FLANGES.**

INTERIOR MOUNT METHOD (FASTENING FROM INTERIOR)

- **Pilot Holes (Track):**
Predrill access holes through the nylon track large enough to allow the fastener and driver to pass through
- **Frame Predrilling:**
Through each access hole, predrill a smaller hole into the aluminum frame
- **Fastener Location:**
 - Install in the **second groove from the interior side**
 - Place fasteners approximately **4" from top and bottom**
 - Add **2–3 additional fasteners**, evenly spaced vertically

- **Fastening Method:**

Fasteners pass:

- Through nylon track (access hole)
- Through frame
- Through shims
- Into structural framing

- **Shimming:**

Shims must be installed at each fastener location and **left in place**

Trim and cover as needed

MULLED UNITS

- Install “A” unit per instructions – apply exterior screw into top and bottom flange prior to inserting “B” unit into opening (Repeat until last unit is installed)
 - Clamp units together.
 - Use same technique as above but insert a self-tapping screw from frame with deep track, through frame into frame of adjacent window (there is a void behind shallow track). Make sure to use the correct length screw so screw doesn’t protrude from track of second window. Do not over tighten.
 - Fasteners required into **top and bottom framing on both sides of each mull**
 - Apply **sealant between top frames/flanges at mull connections**
-

SEALING (CRITICAL)

- Sealant required between **exterior flange and framing**
- Apply sealant **behind side and top flanges only**
- **Do not apply sealant behind sill flange**

Extra care must be taken to ensure the unit is **fully sealed from the exterior**, even though fastening is done from the interior

INSTALLATION REQUIREMENTS

- Unit must be installed **plumb, square, and properly supported**
 - Use shims to make sure frame is not deflected.
 - Do not allow the frame to bow:
 - Outward bowing → sashes will not stay in place
 - Inward bowing → sashes will be too tight and difficult to operate or remove
-

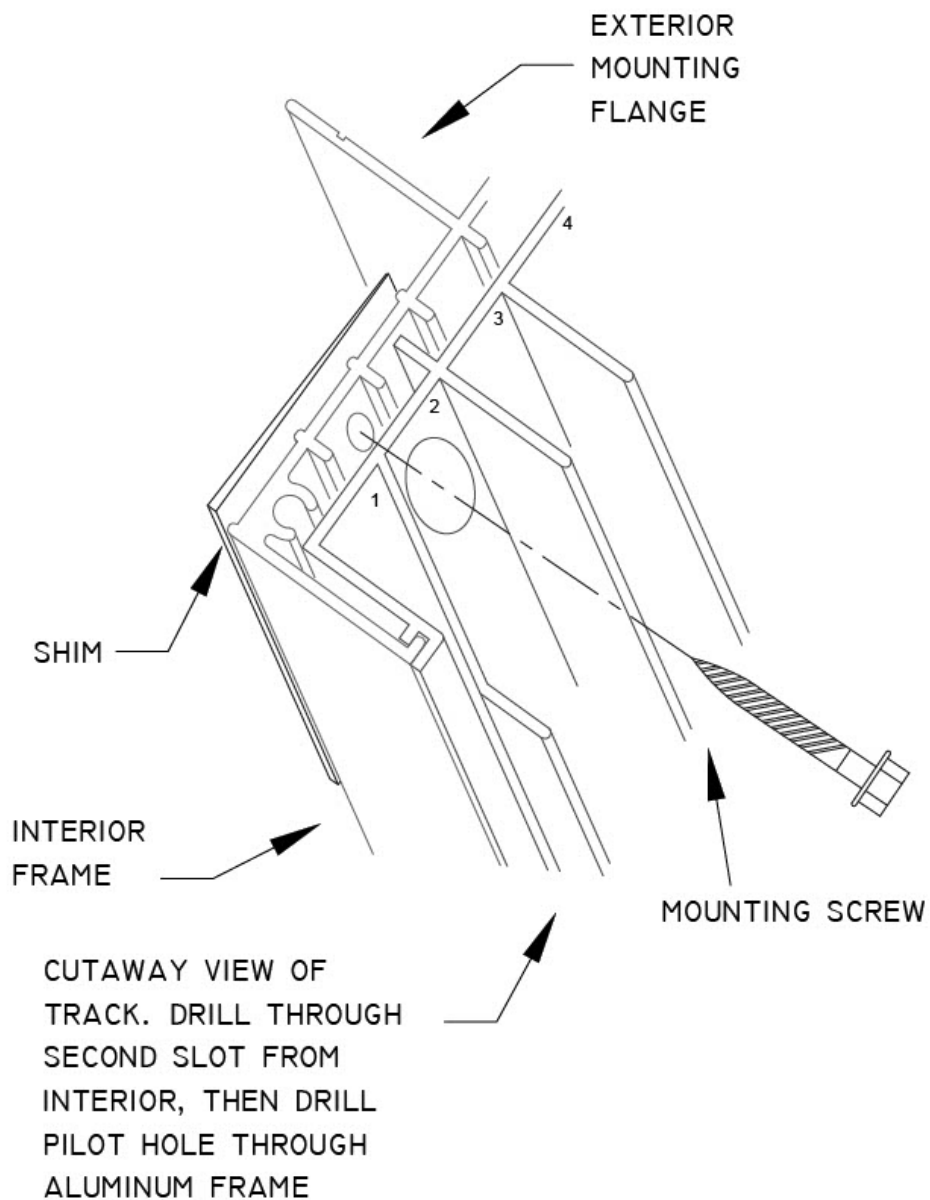
FIXED GLASS UNITS

- May be installed using a similar method
- Pre-drill frame and **leave screw heads exposed** for proper fastening

IMPORTANT NOTES & LIMITATIONS

- Porch Windows Direct does **not supply fasteners or installation hardware** for this method
- Porch Windows Direct does **not warranty performance related to installation** including operation or water sealing
- Access holes drilled through the track will remain visible but will **not impact operation**
- **If you need further help, please contact your salesperson.**

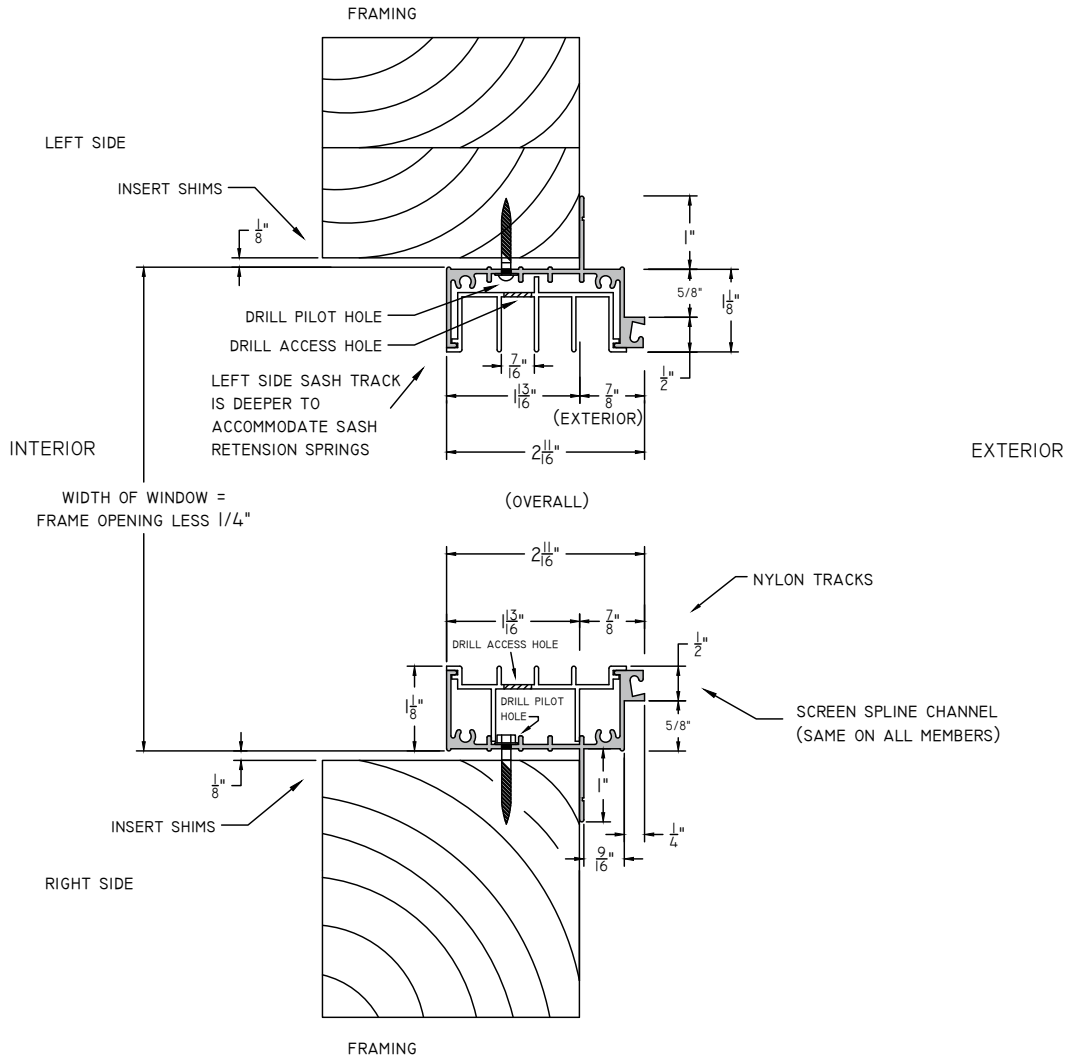
ROTATED CUTAWAY SECTION OF LEFT
SIDE FRAME AND TRACK
(NOT TO SCALE)



SINGLE XTEND 4-VENT PORCH WINDOW

(16 GA POWDER COATED ALUMINUM EXTRUSIONS, APPROX. $\frac{1}{16}$ " THICK)

IMPORTANT: PLEASE NOTE THAT WINDOWS UNDER 60" IN HEIGHT WILL HAVE 3-VENT PANELS UTILIZING THE 3 OUTER TRACKS



NOTES:

USE APPROPRIATE MOUNTING SCREWS

APPLY SEALANT BEHIND BOTH SIDE AND TOP FLANGES ONLY - NO SEALANT BEHIND SILL FLANGE

SCALE 1:2 